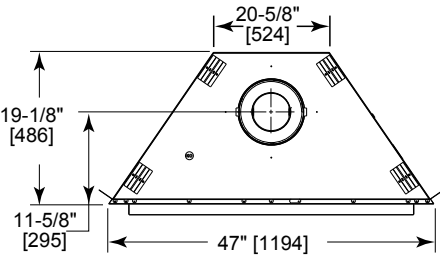




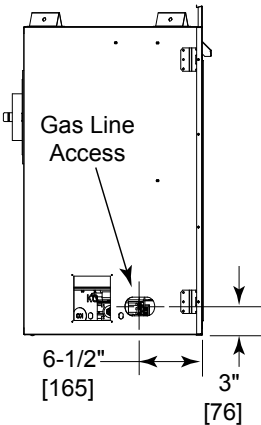
Please consult the manufacturer’s installation manual for all details and requirements before making a final design layout decision.

Novus NDV4842  
Direct Vent Gas Fireplace

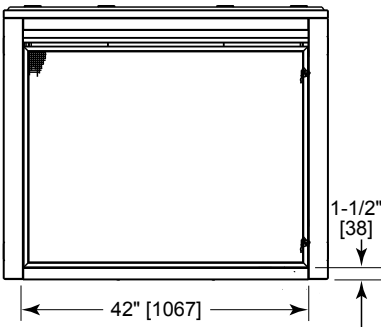
MODEL	FRONT WIDTH		BACK WIDTH		HEIGHT		DEPTH		VIEWING AREA
NDV4842	Actual	Framing	Actual	Framing	Actual	Framing	Actual	Framing	42 x 22-5/8
	47	48	20-5/8	48	35-1/4	34-7/8	19-1/8	19-5/8	



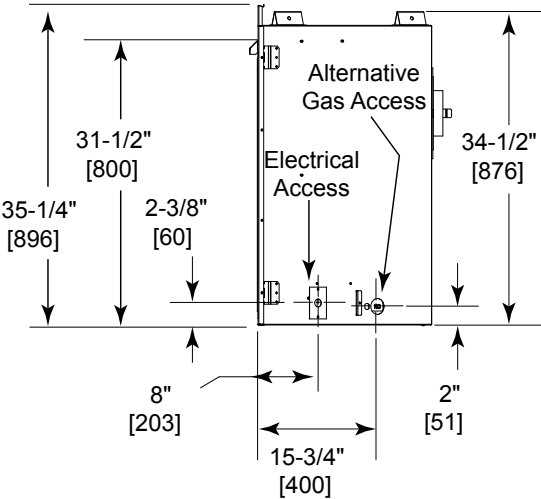
Top View



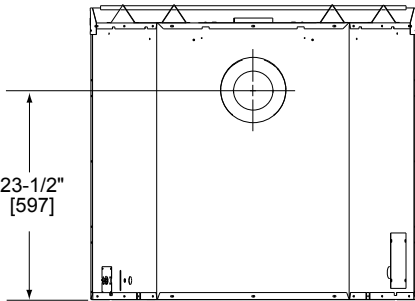
Left View



Front View



Right View

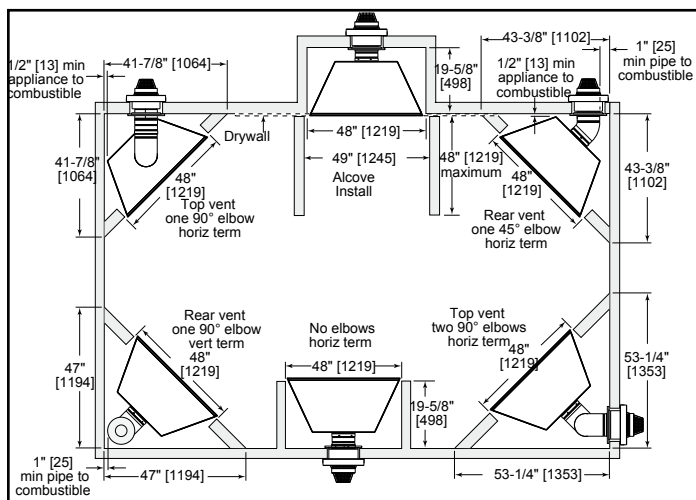


Rear View

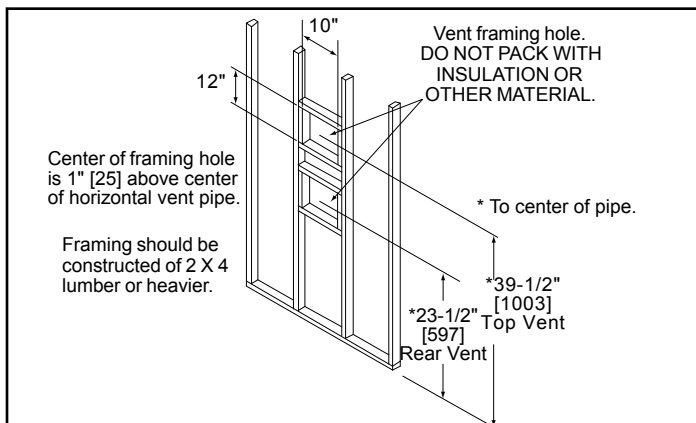
## MINIMUM FIREPLACE CLEARANCES

AREA	TO COMBUSTIBLES (in inches)
CLEARANCE TO CEILING	30
COMBUSTIBLE/NON-COMBUSTIBLE FLOOR	0
SIDES OF APPLIANCE	0
FRONT OF APPLIANCE	36

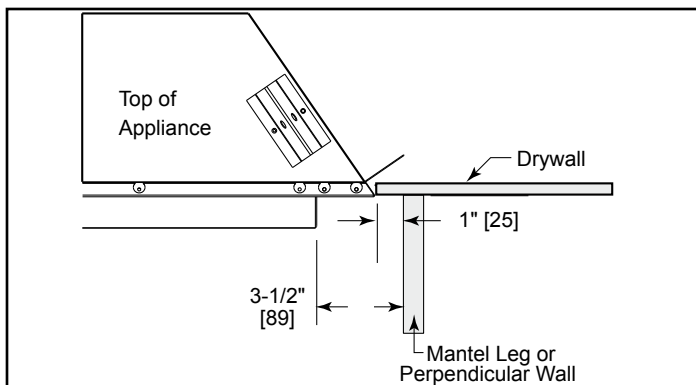
## APPLIANCE LOCATION



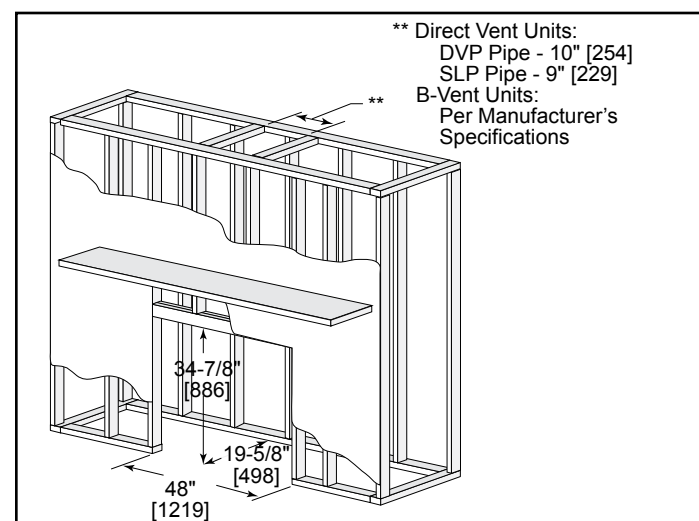
## WALL PENETRATION



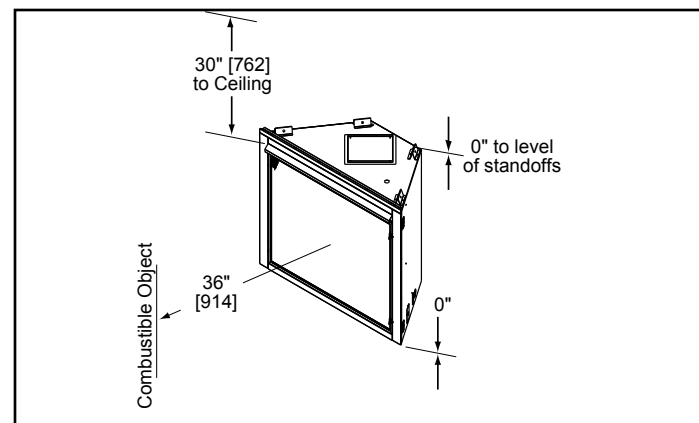
## MANTEL LEG/WALL PROJECTIONS



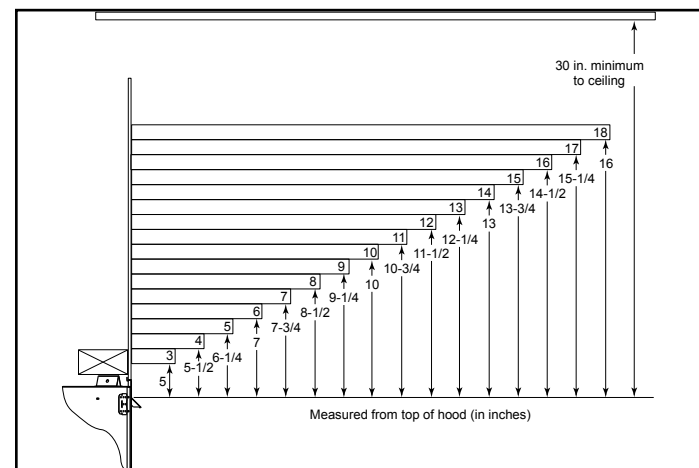
## FRAMING DIMENSIONS



## CLEARANCES TO COMBUSTIBLES



## MANTEL PROJECTIONS



### PRODUCT LISTING CODES

US	ANSI Z21.88a-2008
CAN	CSA 2.33b-2008
UL	UL307B

Product information provided is not complete and is subject to change without notice. Product installation must adhere strictly to instructions accompanying product to avoid risk of fire and potential injury.

Additional information can be found online at [www.heatilator.com](http://www.heatilator.com)